

3" HYDRAULIC SUBMERSIBLE SEWAGE/WASTEWATER PUMP

MODEL SPTS3TR (ALUMINIUM BODY)

MODEL SPTS3TRDI (DI BODY)

3" (75mm) NPTF DISCHARGE

The SPTS3TR model is designed for difficult pumping jobs where stringy solids are present. A fully recessed vortex impeller allows this pump to handle difficult solids found in sewage applications. It has the ability to pass through a 12 inch opening and continue to pump in debris laden job sites.



FEATURES:

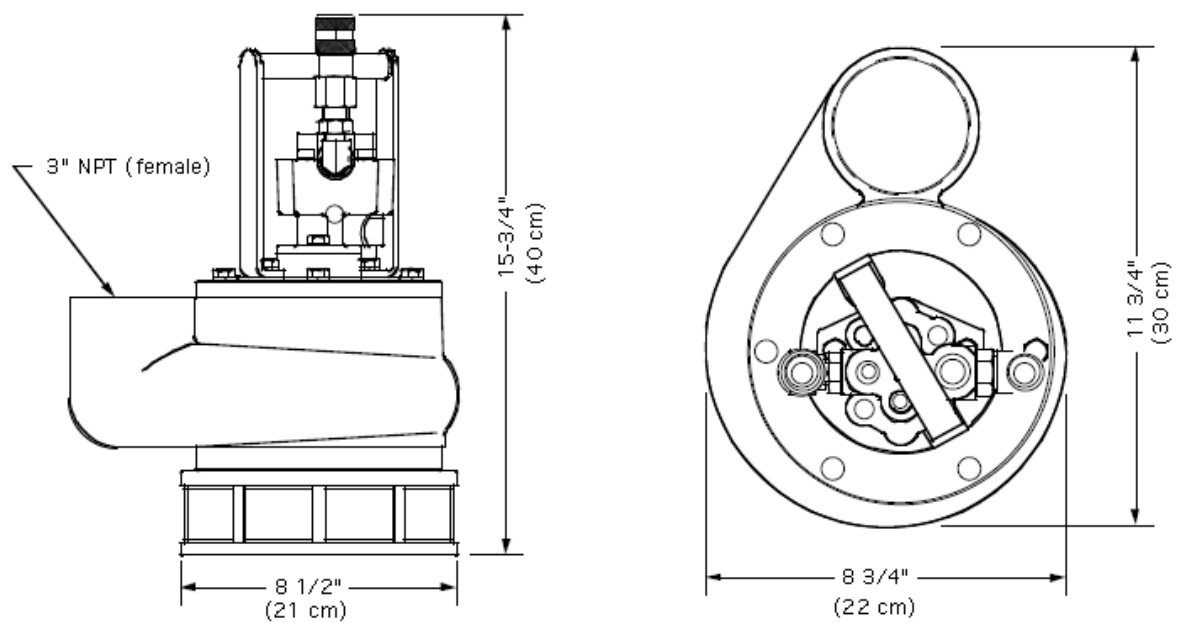
- ✓ Stainless Steel Vortex Flow Impeller
- ✓ Oil Lubricated Seals (can run dry)
- ✓ Variable speed hydraulic drive
- ✓ Small overall size for use in tight spaces
- ✓ Dependable gear type hydraulic motor
- ✓ Can be bolted directly into a pipeline
- ✓ Operates with hydraulic sources capable of flows of to 5-8 GPM
- ✓ Safe hydraulic drive can be used where electric power is hazardous or impractical

SPECIFICATIONS

WEIGHT: SPTS3TR	28 lbs (13kg)
SPTS3TRDI	56 lbs (25 kg)
HEIGHT	15" (38 cm)
WIDTH (@ widest point)	11-3/4" (30 cm)
DISCHARGE	3" NPT(F)
INLET FLANGE	3" 125# ASA
SOLIDS HANDLING	2-1/2" (63mm)
HOSE PORTS	1/2" NPT(F)
PUMP BODY: SPTS3TR	Aluminium
SPTS3TRDI	Ductile Iron
IMPELLER	Stainless steel
SHAFT	Plated 4140 Steel
SHAFT SEAL	Carbon/ceramic (Std)
ELASTOMERS	Buna N (Std)
HYDRAULIC OIL	214-320 SSU@100F
INPUT FLOW	Max 8 GPM(30 LPM)
OPERATING PRESSURE	Max 2500 PSI
POWER SOURCE	Any open center hydraulic system

Specifications are subject to change without notice

MODEL SPTS3TR OVERALL DIMENSIONS



MODEL SPTS3TR TYPICAL PERFORMANCE

